

Mathematics

Subtraction

Practice Questions

Complete these subtraction sums:

a) $9671 - 7269 =$ _____
 b) $2009 - 173 =$ _____

c) Arrange the two sets of digits below into descending order, find the difference and then subtract 200.

5912 and 1931

d) Calculate $8.6 - 3.32$ _____
 e) Calculate $4.32 - 1.9$ _____
 f) Calculate $0.16 - 0.032$ _____

g) Kelis owns a bicycle shop. What is the difference between the cheapest and most expensive bike? _____



h) Subtract three hundred and eight from seven hundred and six. _____

i) A cinema seats 450 people. So far, they have sold 143 tickets. How many more tickets to they need to sell to be at full capacity? _____

What do I do?



Answer the questions carefully. Some questions may require more than one step.

Top Tips!



- You might be asked to:**
- Subtract numbers up to 1,000,000
 - One-step subtraction problems
 - Two-step subtraction problems
 - Subtraction involving fractions or decimal amounts

What skills do I need to improve?



- Doing lots of practice questions will help with becoming familiar with question types but what else can you do to improve in this area?**
- Ensure that you know simple subtraction facts, such as number bonds, to help you to mentally subtract amounts with accuracy and speed.
 - Revise subtraction vocabulary as these words can sometimes cause confusion!

How many different subtraction key words can you think of?
 (Think about words that may be used in word problems!)

Mathematics

Subtraction

Answers

a) 2402

b) 1836

c) **Step 1:** Rearrange the digits to make 9521 and 9311

Step 2: $9521 - 9311 = 210$ (this is the difference)

Step 3: Minus 200 = 10

Answer = 10

d) 5.28

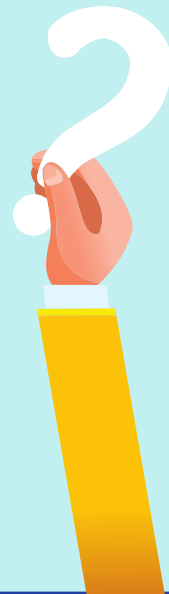
e) 2.42

f) 0.128

g) $976 - 565 = 411$

h) 398

i) 307



Subtraction key words: subtract, less, minus, take away, difference, left, remain, decrease, decline, change, fewer, shorter, deduct...

