

Mathematics

Place Value

Practice Questions

Identify the value of the underlined number:

- 4,653
- 88,528
- 128,628
- 3,829,772

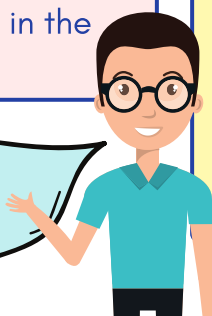
5. What is 1000 more than 126,528?
6. What is 100 less than 34,089?
7. What is 10,000 more than 999,999?
8. What is 100,000 less than 1,982,726?
9. Theme park tickets are £45.
How much do 1000 tickets cost?

10. Jerry has some number cards:



- Write the largest possible number he can make.
- Write the smallest possible number he can make.
- Write the largest odd number he can make.
- Write the smallest even number he can make.
- Write a number that has a 2 in the thousands place.

If your phone number was turned into a large number. How would it read? (Take off the first 0)



What do I do?



Place value is the value of a digit within a number. You will be expected to know what each digit within a number represents.

You could be asked to:

- Identify the value of a digit
- Add or subtract from a digit's value
- Create numbers from number cards
- Place numbers on a number line

In some questions, the skill of finding a digit's value could be hidden within a word problem.

Top Tips!



- Be sure to read the question carefully and read it TWICE!
- Make sure you're confident with reading and writing large numbers. Sometimes these numbers will be in their millions.

What skills do I need to improve?



Doing lots of practice questions will help with becoming familiar with question types but what else can you do to improve in this area?

- The best skill to improve here would be to make sure that you're confident with reading and writing large numbers.
- At the shop? Read how much the shopping costs and identify the values of some of the digits.
- Looking for larger numbers? Try looking online or in shop windows of houses for sale, some of those number will be in their millions!

Mathematics

Place Value

Answers

Identify the value of the underlined number:

- 4,653 - **50** (fifty)
- 88,528 - **8,000** (eight thousand)
- 128,628 - **20,000** (twenty thousand)
- 3,829,772 - **700** (seven hundred)

5. What is 1000 more than 126,528? **127,528**

6. What is 100 less than 34,089? **33,989**

7. What is 10,000 more than 999,999? **1,009,999**

8. What is 100,000 less than 1,982,726? **1,882,726**

9. Theme park tickets are £45.

How much do 1000 tickets cost?

45,000

10. Jerry has some number cards:



- Write the largest possible number he can make. **98,752**
- Write the smallest possible number he can make. **25,789**
- Write the largest odd number he can make. **98,725**
- Write the smallest even number he can make. **25,798**
- Write a number that has a 2 in the thousands place.
Any number with a 2 in the thousands space - **?2,???**
All number cards must be used and no numbers duplicated.

